

Color Information

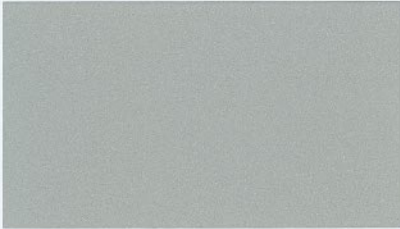
NoriCard

Screen printing ink for card lamination
Laminierfähiges Farbsystem für Karten

Substrate: Genotherm Card CC-M230/18 White 04/1450-493, KLÖCKNER PENTAPLAST GmbH

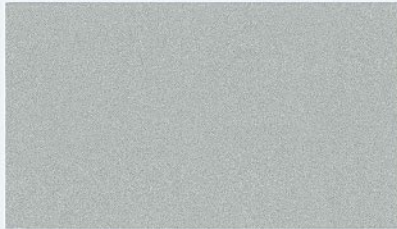
771

*100-40



776

*77-55



781

*61-64



861/001

*100-40



861/002

*77-55



861/003

*61-64



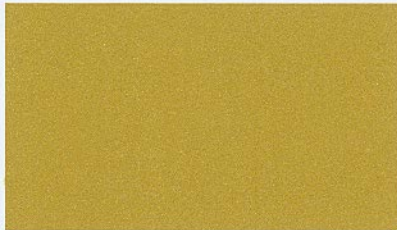
862/001

*100-40



862/002

*77-55



862/003

*61-64



863/001

*100-40



863/002

*77-55



863/003

*61-64



864/001

*100-40



864/002

*77-55



864/003

*61-64



* Mesh count stated in cm

Pröll KG

P.O. Box 429
91773 Weissenburg i. Bay.
Germany
Phone: +49-9141-906-0
Fax: +49-9141-906-49
e-mail: info@proell.de
www.proell.de

0,2/05/05

Proell, Inc.

2751 Dukane Drive
St. Charles, IL 60174-3343
USA
Phone: +1-630-587-2300
Fax: +1-630-587-2666
e-mail: d.haas@proell-inc.com
www.proell-inc.com

